

**1970s  
Linda & Peter  
Kershaw  
Photos  
Canol Heritage  
Trail**

©G Peter and Linda J Kershaw

Camp 108, head of Bolstead Ck (M108-1977)

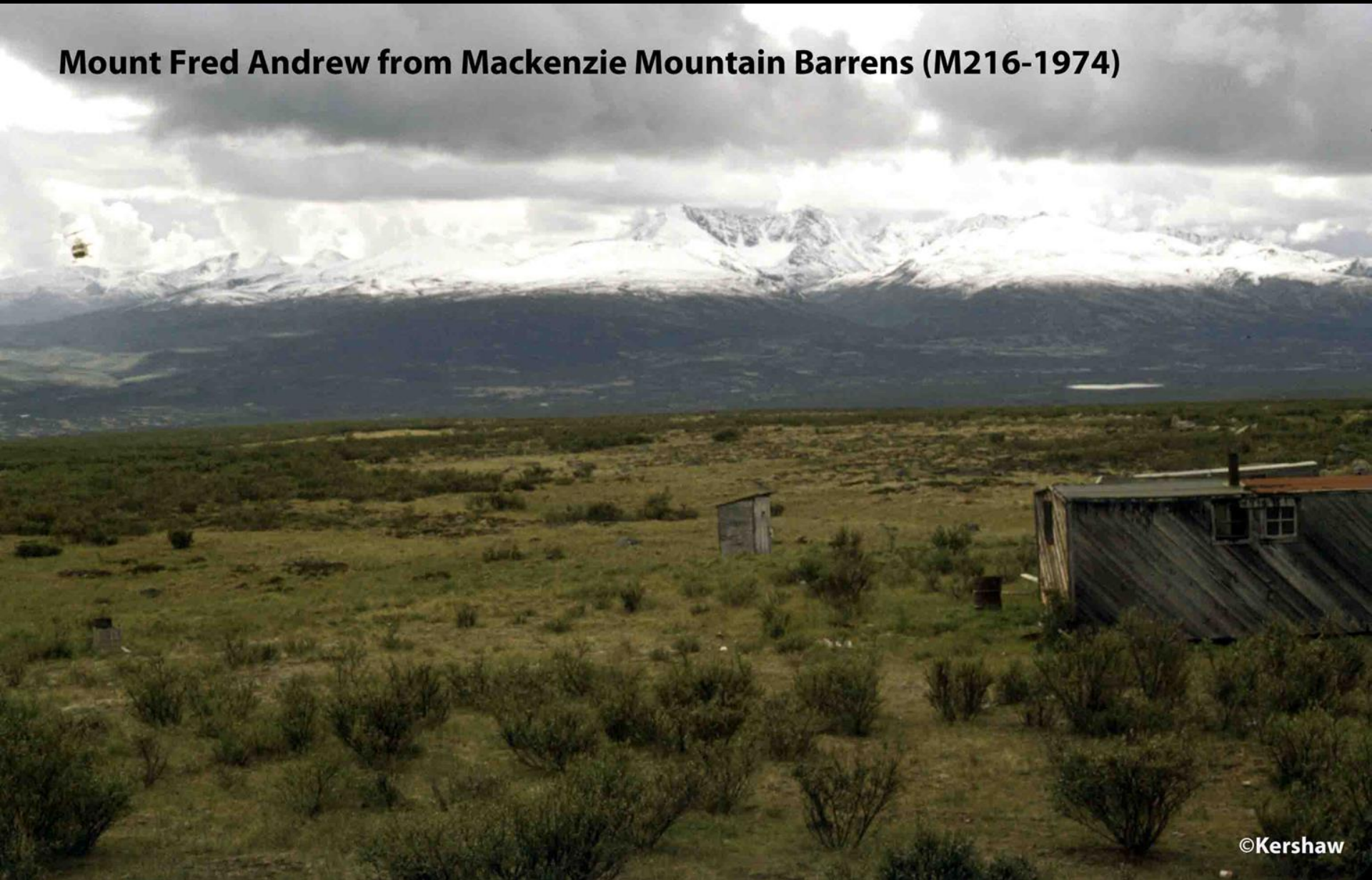


©Kershaw

# Vehicle graveyard at Camp 222 before being moved (M222.5-1974)



**Mount Fred Andrew from Mackenzie Mountain Barrens (M216-1974)**

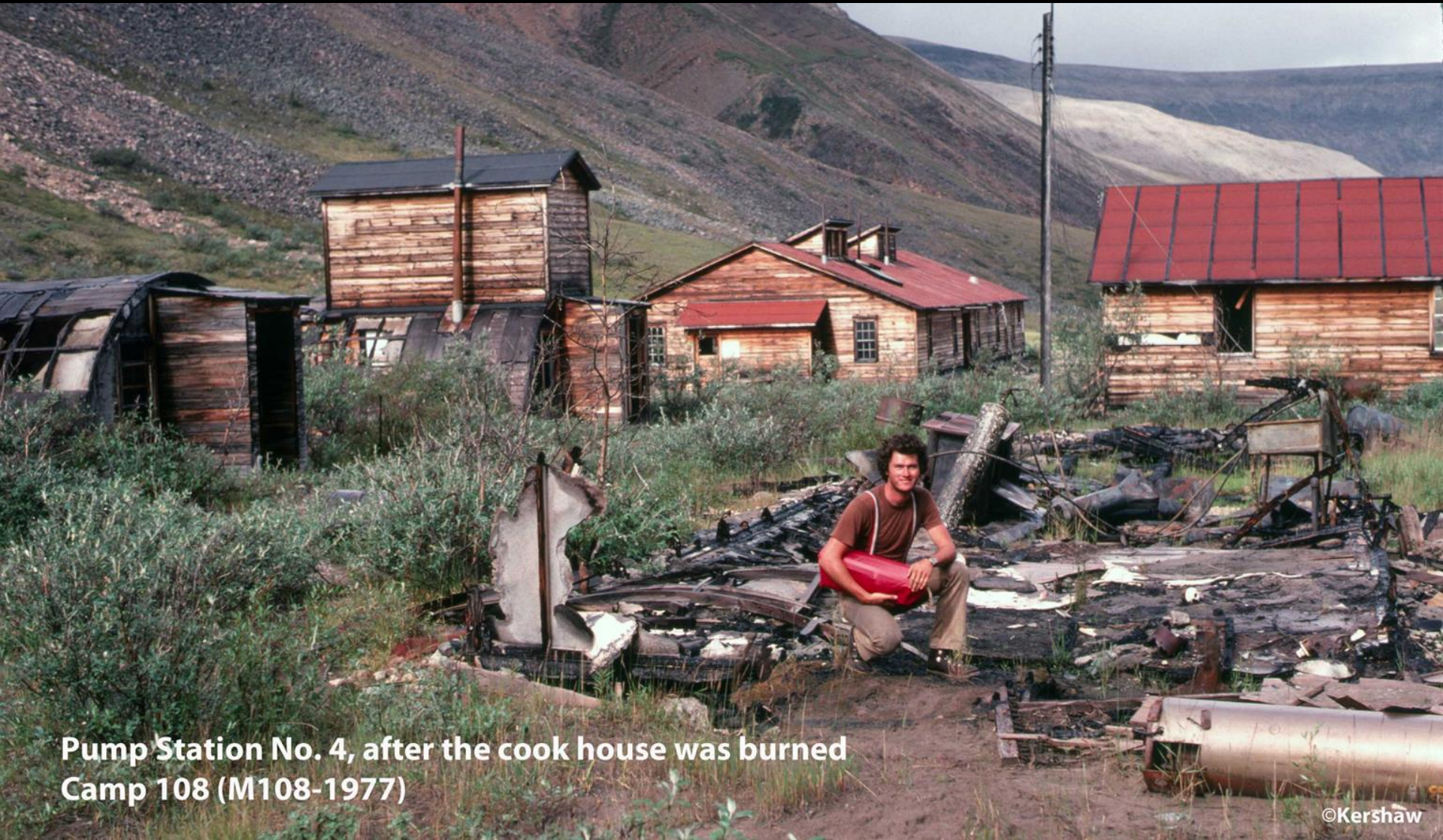


**Mackenzie Mountain Barrens, telephone line & Bluebell Ck. bridge  
before deconstruction (M215-1977)**



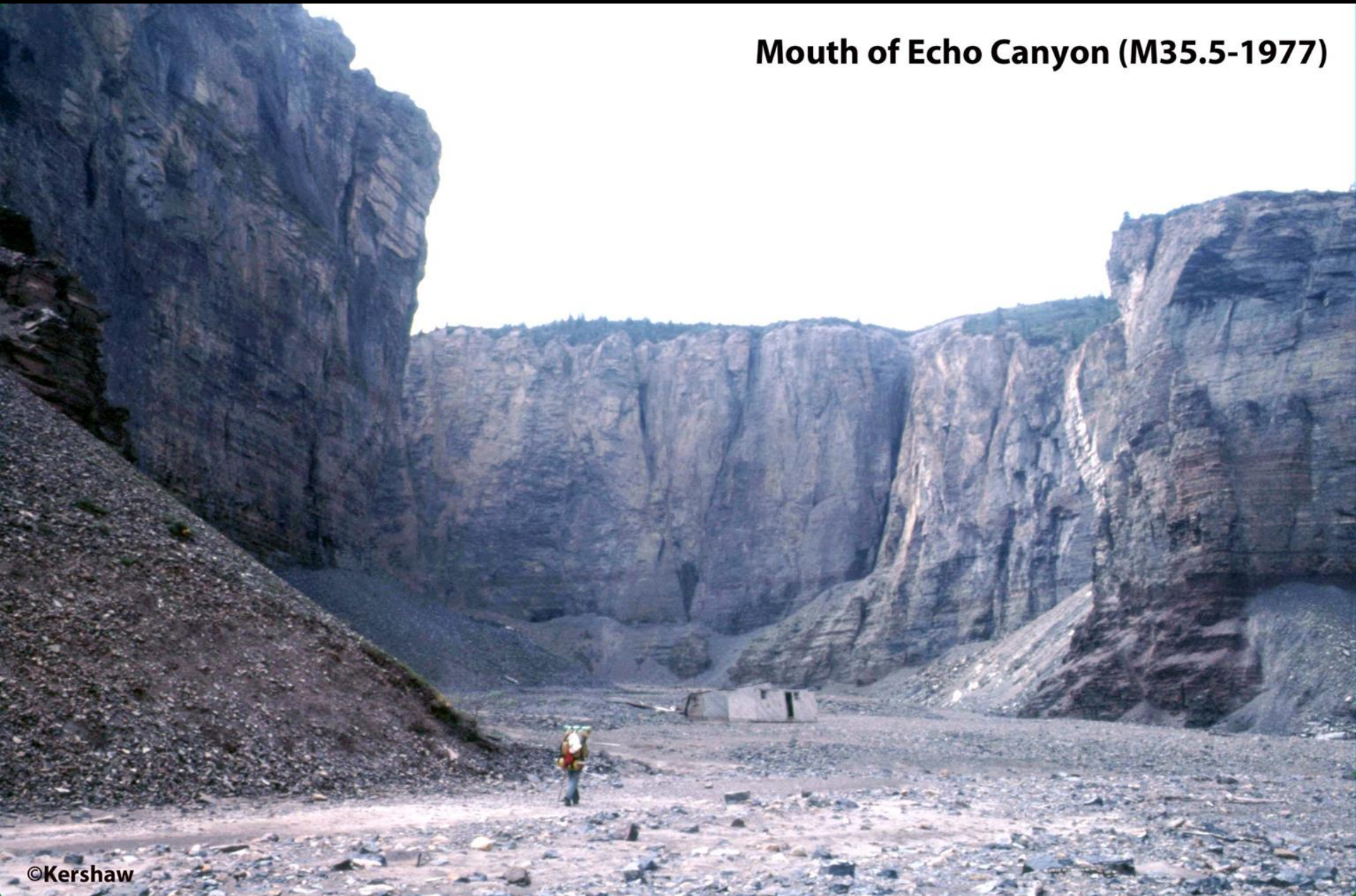
**High point on Mackenzie Mountain Barrens (1719m)  
future site of Dechen la' Lodge (M212-1977)**





**Pump Station No. 4, after the cook house was burned  
Camp 108 (M108-1977)**

## Mouth of Echo Canyon (M35.5-1977)



**Echo Falls  
(M35-1977)**





**Butte along Little Keele R. (M69.5-1977)**



**Remnants of the telephone line  
Mackenzie Mountain Barrens (1.5kmN of M214-1978)**





**Snow cave accommodation  
under bridge (M200.5-1979)**

**Highest Elevation on the Trail (~1730m)  
on Telephone Line (1kmE of M84-1979)**



**Bolstead Ck. overflow sets the stage for aufeis  
(M104-1979)**



Canol Hilton in its hayday (M108-1979)



After the storm, Plains of Abraham  
(8kmS of M70-1979)



©Kershaw

**Descending off Plains of Abraham  
(7kmS of M70-1979)**



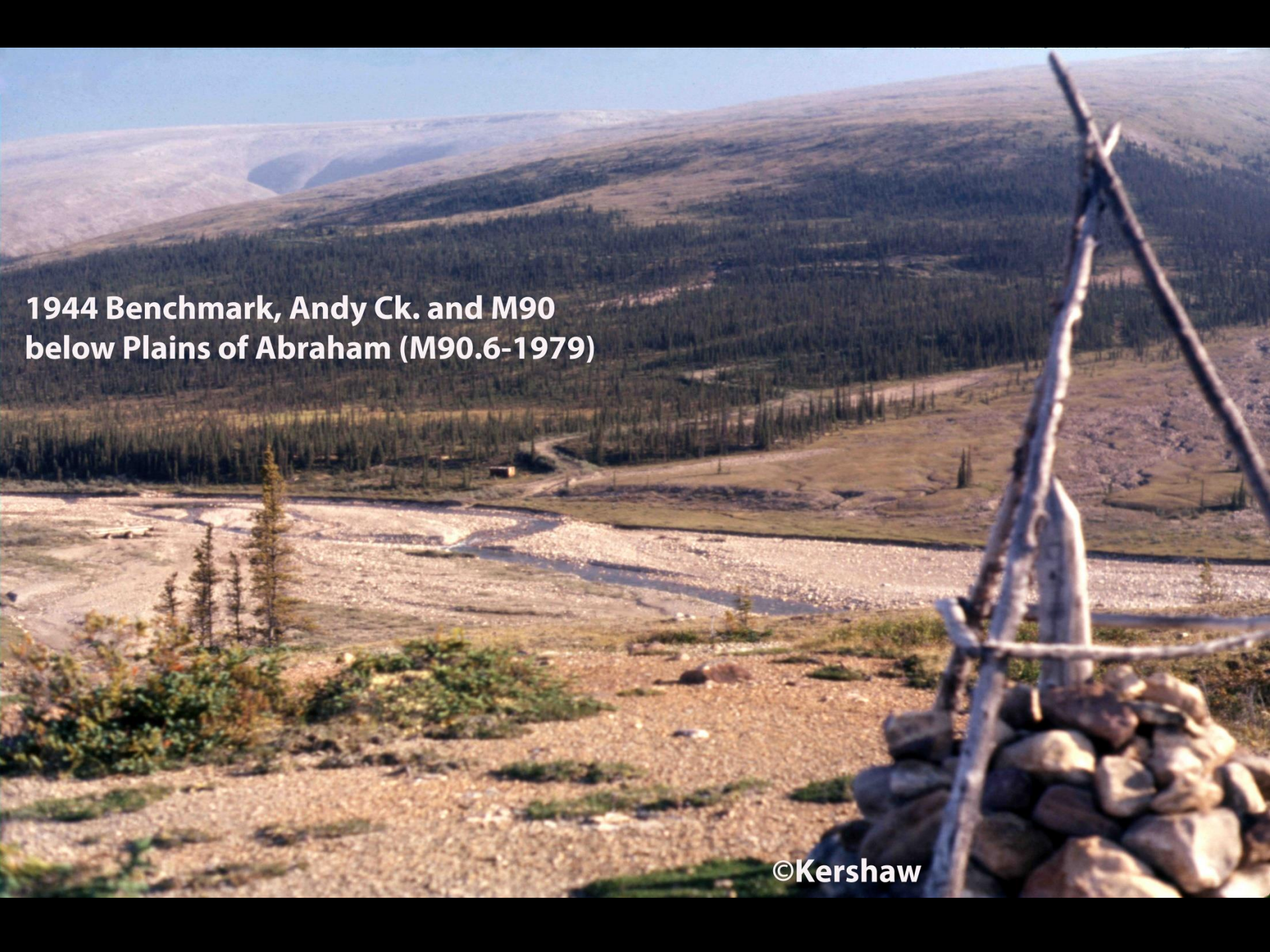


**Blue Mountain in Spring  
(~M61-1979)**





**Caribou feeding craters  
Yellow Grass L. (M58-1979)**



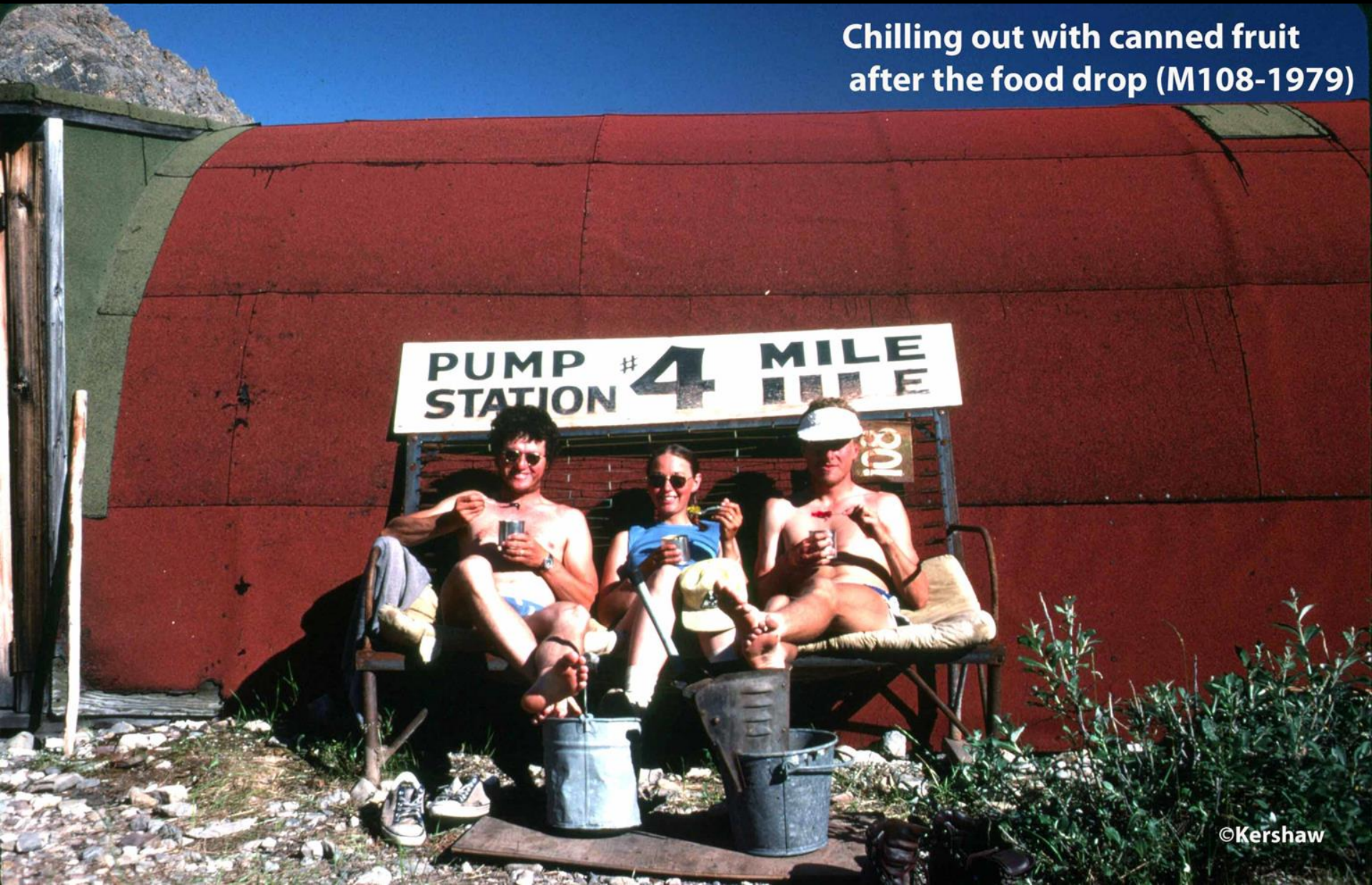
**1944 Benchmark, Andy Ck. and M90  
below Plains of Abraham (M90.6-1979)**

©Kershaw

**Intact telephone line, Plains of Abraham (M85-1978)**



Chilling out with canned fruit  
after the food drop (M108-1979)



©Kershaw

**Plains of Abraham from atop Blue Mtn. (above M64A-1979)**

